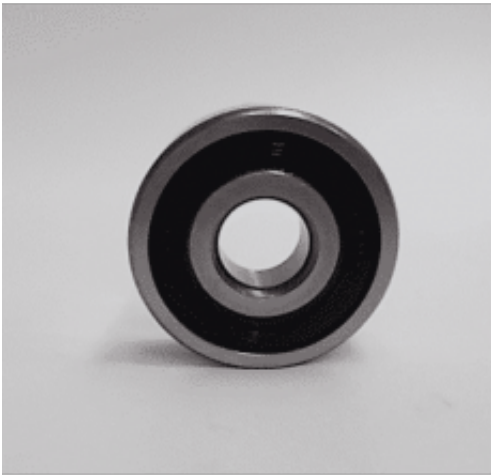


AD-015 - Bearing



Spare Part Number: AD-015

Net Weight: 0.00kg

Net Dimensions: 0.00cm x 0.00cm x 0.00cm

Description

AD-015 Bearing

Bearings support rotating shafts, allowing them to rotate more smoothly. They reduce friction cutting down on the amount of energy consumption. They also protect the part that supports the rotation and maintain the correct position for the rotating shaft. Bearings perform the function of preventing damage from being done by the force applied to the part that supports the rotation and also of maintaining the correct position of the rotating shaft.

ø10 x ø30 x h9 mm

6200 2Rs/I

Equipment Ref

Classic 3 P

EVO 3 IP

EASY TO PLATE EVO 3 IPD

EASY TO PLATE EVO 3 IPI

EVO 4 D

EVO 4 DLF

EVO 4 IP

EASY TO PLATE EVO 4 IPD

EASY TO PLATE EVO 4 IPI

EVO 5 D

EVO 5 DLF

EVO 5 IP

EASY TO PLATE EVO 5 IPD

EASY TO PLATE EVO 5 IPI

EVO 5 BP

EASY TO PLATE EVO 5 BPD

EASY TO PLATE EVO 5 BPI

620

621

830

Catalogues/Families

Suitable for the following equipment models:

CLASSIC 3 P	
-------------	--

CLASSIC 4 P	
EASY TO PLATE EVO 3 IPD	
EASY TO PLATE EVO 3 IPI	
EASY TO PLATE EVO 4 IPD	
EASY TO PLATE EVO 4 IPI	
EASY TO PLATE EVO 5 BPD	
EASY TO PLATE EVO 5 BPI	
EASY TO PLATE EVO 5 IPD	
EASY TO PLATE EVO 5 IPI	
EVO 3 IP	
EVO 4 D	
EVO 4 DLF	
EVO 4 IP	
EVO 5 BP	
EVO 5 D	
EVO 5 DLF	
EVO 5 IP	
Spare Part Type	
Mechanical Component	
Spare Part Group	
Others	
Stock Type	
Standard Stock	